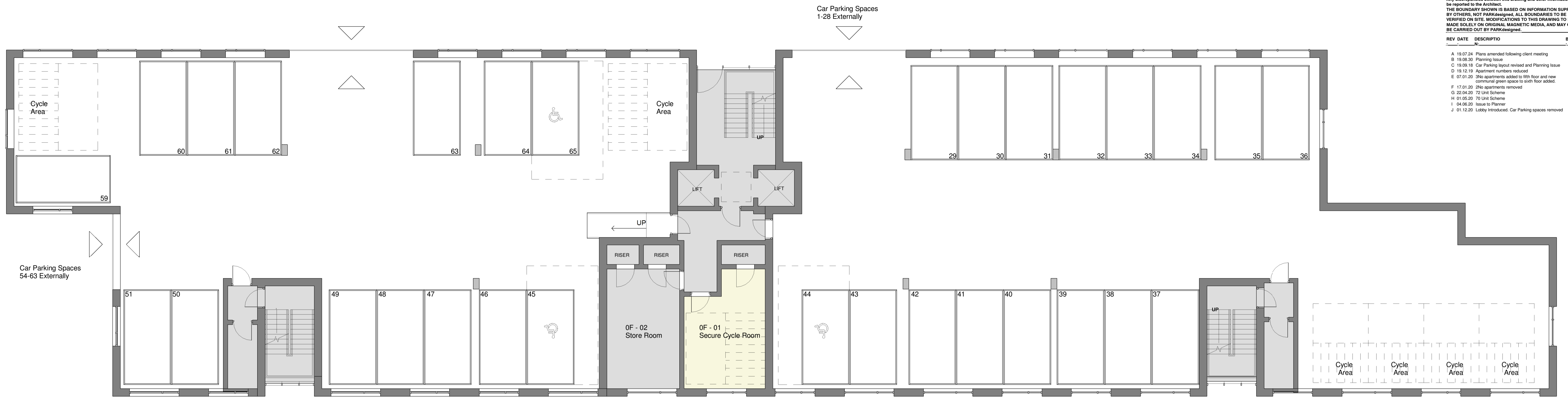


DO NOT SCALE this drawing, figured dimensions only are to be used. This drawing is the sole copyright of PARKdesigned. Any discrepancies between this drawing and other information should be reported to the Architect. THE BOUNDARY SHOWN IS BASED ON INFORMATION SUPPLIED BY OTHERS, NOT PARKdesigned. ALL BOUNDARIES TO BE VERIFIED ON SITE. MODIFICATIONS TO THIS DRAWING TO BE MADE SOLELY ON ORIGINAL MAGNETIC MEDIA, AND MAY ONLY BE CARRIED OUT BY PARKdesigned.

REV	DATE	DESCRIPTION	BY	RVW:
A	19.07.24	Plans amended following client meeting	JP	JP
B	19.08.20	Planning Issue	JP	JP
C	19.09.18	Car Parking layout revised and Planning Issue	JP	JP
D	19.12.19	Apartment numbers reduced	JP	JP
E	07.01.20	2No. apartments added to fifth floor and new communal green space to sixth floor added.	JP	JP
F	17.01.20	2No. apartments removed	JP	JP
G	22.04.20	72 Unit Scheme	JP	JP
H	01.05.20	70 Unit Scheme	JP	JP
I	04.06.20	Issue to Planner	JP	JP
J	01.12.20	Lobby Introduced, Car Parking spaces removed	JP	JP



Ground Floor 1:100@A1



First Floor 1:100@A1

Ground Floor Schedule:-
 1no. Secure Cycle Room
 1no. Store Room

First Floor Schedule:-
 10no. 1 Bed Apartments
 4no. 2 Bed Apartments
 1no. Plant Room
 1no. Communal Gym
 Total Apartments - 14

Building Schedule:-
 1no. Store Room
 2no. Plant Room
 2no. Communal Gardens
 1no. Communal Gym
 1no. Secure Cycle Room
 53no. 1 Bed Apartments
 17no. 2 Bed Apartments
 70. Total Apartments

PARKdesigned
 architects

Leeds: The Loft, 13 Carlton Mills, Armley, LS12 2QG		Tel: 0113 819 8057	
London: Hamilton House, Mabledon Place, Bloomsbury, WC1H 9BB		E-mail: info@parkdesigned.com	
Client:	Date:	Scale:	
Telford Development Limited	June 19	1 : 100@A1	
Project Name:	Drawn:	Reviewed:	
Telford Snooker Centre, Telford, TF2 9BF	JP	JP	
Drawing Title:	Drawing No:	Revision:	
Proposed Plans Sheet 1 of 4	200	J	
Drawing Status:	Project No:		
Planning	19.17		